

# **R** **SHAN**

## **Machine Tools**

**Exporters & Manufacturers of**

All Kinds of Automatic Gold Jewellery ⚡ Laser Chain  
Making Machines and Its Tools & Parts

# About Us

## **Late Shri Roshan Lal Sharma** **(Founder of Roshan Machine Tools)**

Established in 1992, Roshan Machine Tools is an eminent leader in manufacturing and supplying an extensive range of high quality Automatic Gold Jewellery Laser Chain Making Machines. These products are acknowledged for their excellent robustness, sturdy construction, energy efficiency. We offer a wide range of these high-performance machines including fine quality Joint Laser Chain Machine (RMT-JLM-001), Joint KDM Chain Machine (RMT-JKM-002), Automatic Figaro L/S, Cable, Curb, Left Right Curb Chain Making Machine (RMT-FGM-011), Automatic Cable, Curb Left Right Curb Chain Making Machine (RMT-LRCA-003), Automatic High Speed Venetian Chain Making Machine (RMT-HVM-012) and Automatic Venetian Chain Making Machine (RMT-AVM-010). These Machines are specially designed by our qualified professionals to other our clients high performance innovative machines for every procedure involved in the manufacturing process gold jewellery chain. We exports our chain machines in all over the World. Working under the four generation experience leadership of the talented team of Mr. R.P. Sharma and Mr. A.K. Sharma and Mr. P.K. Sharma we have achieved new levels of success. Their exceptional guidance and extensive knowledge all benefits the company in increasing its productivity of a wide gamut of innovative products.





# JOINT LASER CHAIN MACHINE RMT-JLM-001



**R<sup>o</sup>SHAN**  
Machine Tools

**Joint Laser Chain Machine** ⚡

**Model: RMT-JLM-001**

- Max Width of Finished Chain: 14 mm
- Max Height of Finished Chain: 4 mm
- Max Pitch: 15 mm
- Production Speed: 600 welds/min
- Lubrication: Manual Pump
- Pneumatic Supply: 5 / 6 Bars
- Power Supply: 230V, 50/60 Hz, 1 Phase
- Power Absorption: 150 VA
- Air Consumption: 15 l/min
- Machine Dimension: 98 × 56 × 156 cm
- Net Weight: 110 Kg



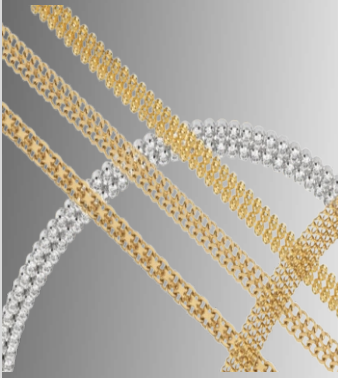
# HOLLOW CHAIN JOINT KDM MACHINE RMT-JKM-002

**ROSHAN**  
Machine Tools

## Hollow Chain Joint KDM Machine ⚡

### Model: RMT-JKM-002

- Max Width of Finished Chain: 14 mm
- Max Height of Finished Chain: 4 mm
- Max Pitch with Pusher: 15 mm
- Production Speed: 120/min
- Lubrication: Manual Pump
- Pneumatic Supply: 5 / 6 Bars
- Power Supply: 230V, 50/60 Hz, 1 Phase
- Power Absorption: 0.15 kW
- Air Consumption: 15 l/min
- Gas Generator: KDM Gas Generator
- Machine Dimension: 98 × 56 × 156 cm
- Net Weight: 95 Kg



# AUTOMATIC HIGH SPEED VENETIAN CHAIN MAKING MACHINE

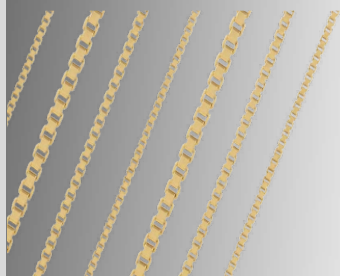
## RMT-HVM-012



### Automatic High-Speed Venetian Chain Making

#### Machine Model: RMT-HVM-012

- Box Chain Size: 0.20 mm to 1.00 mm
- Production: 350–500 links/min
- Power Supply: 0.50 HP / 0.25 kW – 1 Phase
- Machine Compatible with Laser ⚡ (Optional)
- Lubrication: Yes / Automatic
- Stop Sensor: Automatic
- Raw Material: D2 Steel and M2
- Machine Dimension: 50 × 53 × 134 cm
- Net Weight: 85 Kg





# AUTOMATIC VENETIAN CHAIN MAKING MACHINE

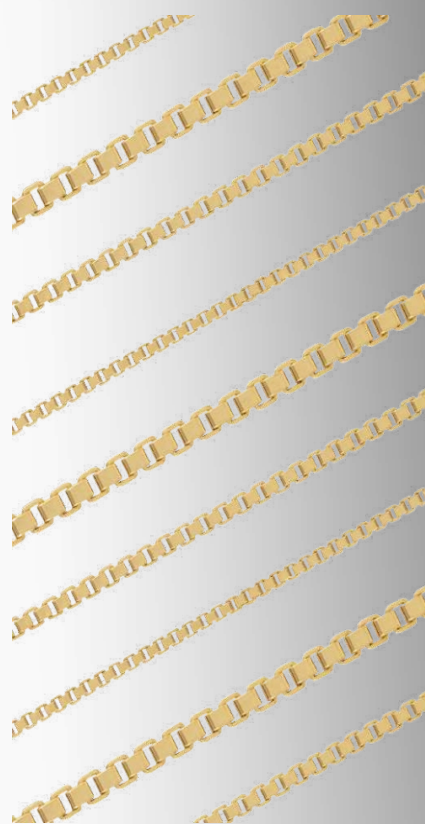
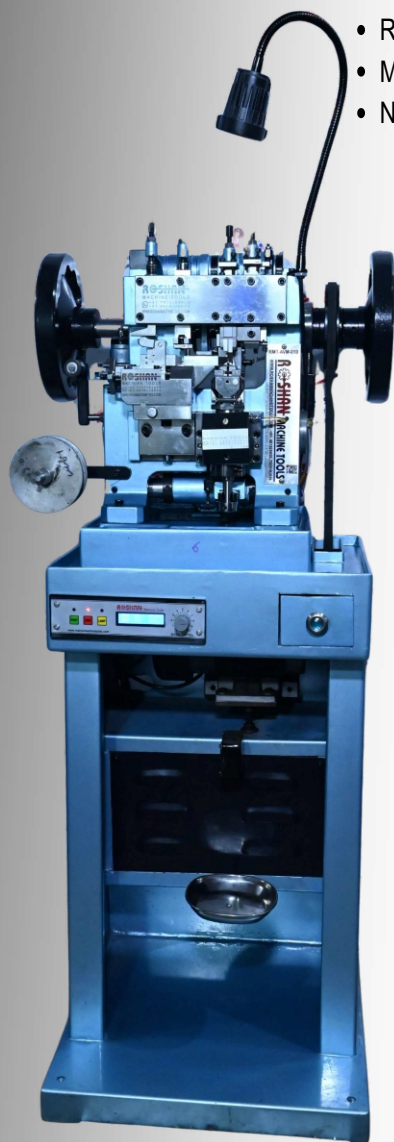
## RMT-AVM-010



### Automatic Venetian Chain Making Machine

Model: RMT-AVM-010

- Chain Size: 0.25 mm to 0.85 mm
- Production: 150–250 links/min
- Machine Compatible with Laser ⚡ (Optional)
- Power Supply: 0.50 HP / 0.56 kW – 1 Phase
- Lubrication: Yes / Automatic
- Stop Sensor: Automatic
- Raw Material: D2 Steel and M2
- Machine Dimension: 45 × 50 × 134 cm
- Net Weight: 130 Kg



# AUTOMATIC FIGARO L/S, CABLE, CURB, LEFT RIGHT CURB CHAIN MAKING MACHINE - RMT-FGM-011

## Automatic Figaro L/S, Cable, Curb, Left-Right Curb Chain Making Machine

Model: RMT-FGM-011

- Machine is electronically Programmed & Controlled through PLC
- Chain Size: 0.5 mm to 2.5 mm
- Production: 100–140 RPM
- Machine Compatible with Hollow Device (Optional)
- Power Supply: 3 kW / Single Phase
- Lubrication: Yes / Automatic
- Stop Sensor: Automatic
- Raw Material: D2 Steel and M2
- Machine Dimension: 82 × 100 × 150 cm
- Net Weight: 470 Kg



# AUTOMATIC CABLE, CURB, LEFT RIGHT CURB CHAIN MAKING MACHINE (GUF-TOP CUT) - RMT-LRCA-003



**Automatic Cable, Curb, Left-Right Curb  
Chain Making Machine (GUF-TOP CUT)**

**Model: RMT-LRCA-003**

- Machine is electronically Programmed & Controlled through PLC
- Chain Size: 0.20 mm to 0.80 mm
- Production: 250–350 links/min
- Machine Compatible with Hollow Device (Optional)
- Machine Compatible with Laser 🔴 (Optional)
- Power Supply: 0.50 HP / 0.56 kW – 1 Phase
- Lubrication: Yes / Automatic
- Stop Sensor: Automatic
- Raw Material: D2 Steel and M2
- Machine Dimension: 45 × 50 × 134 cm
- Net Weight: 130 Kg



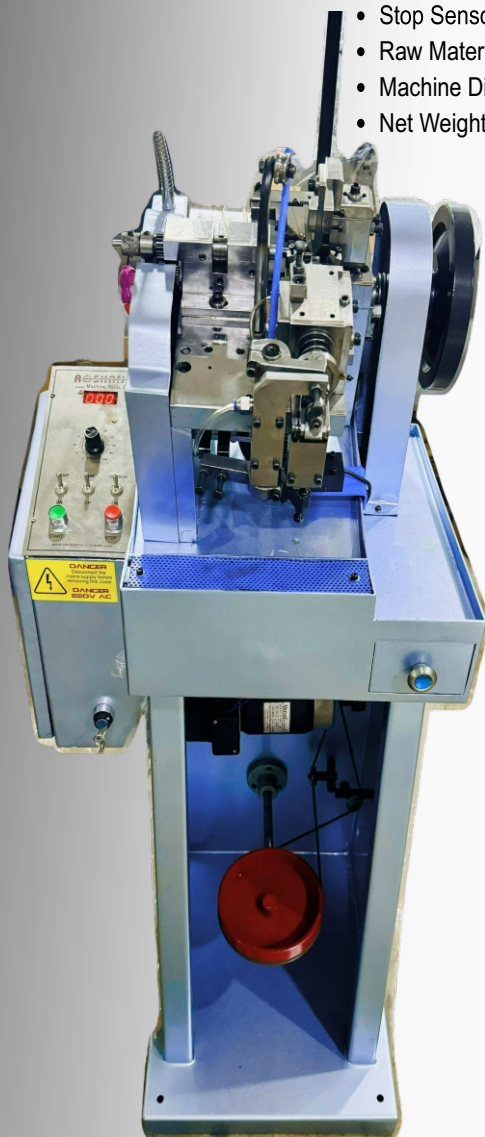


# AUTOMATIC CABLE, CURB, LEFT RIGHT CURB CHAIN MAKING MACHINE (NORMAL TOP CUT) - RMT-ACM-005

## Automatic Cable, Curb, Left Right Curb Chain Making Machine (Normal Top Cut)

Model: RMT-ACM-005

- Chain Size: 0.20 mm to 0.80 mm
- Production: 350 links/min
- Machine Compatible with Hollow Device (Optional)
- Machine Compatible with Laser ⚡ (Optional)
- Power Supply: 0.50 HP / 0.56 kW – 1 Phase
- Lubrication: Yes / Automatic
- Stop Sensor: Automatic
- Raw Material: D2 Steel and M2
- Machine Dimension: 45 × 50 × 134 cm
- Net Weight: 130 Kg



# AUTOMATIC FIGARO CHAIN MAKING MACHINE RMT-AFM-004



## Automatic Figaro Chain Making Machine

Model: RMT-AFM-004

- Chain Size: 0.30 mm to 2.00 mm
- Production: 180–200 links/min
- Power Supply: 0.70 kW, Single Phase
- Lubrication: Yes / Automatic
- Stop Sensor: Automatic
- Raw Material: D2 Steel and M2
- Machine Dimension: 74 × 98 × 147 cm
- Net Weight: 300 Kg



# HOLLOW CHAIN DEVICE RMT-HLD-006



**R<sub>2</sub>SHAN**  
Machine Tools

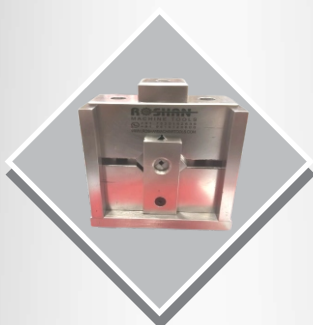
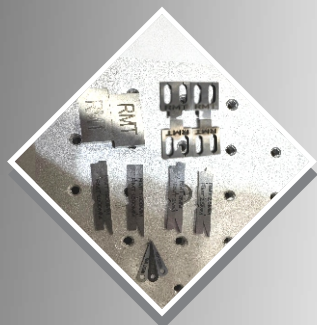
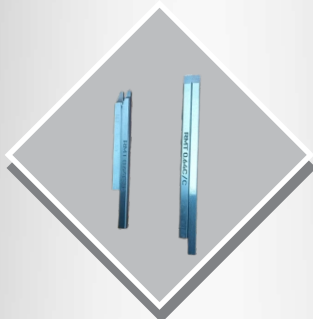
## Hollow Chain Device RMT-HLD-006

- Designed for orientation of crimped hollow wires in goldsmith machinery
- Wire diameter compatibility: 0.25 mm to 3.00 mm
- Manual wire loading on special reels when machine is stopped
- Automatic continuous rotation for precise wire orientation during production
- Optical fiber sensor with manual sensitivity adjustment via trimmer
- No component change required when switching wire sizes
- Pre-configured electrical and mechanical interface for chain machines
- Compatible with alternating Figaro chain machines





# JOINT ⚡ LASER MACHINE TOOLS, CHAIN MACHINE TOOLS, HAMMERING BLOCK & BITS



## **ROSHAN** Machine Tools

Exporters & Manufacturers of

All Kinds of Automatic Gold Jewellery ⚡ Laser Chain  
Making Machines and Its Tools & Parts

📍 Office : 11/48-H/2/A/B, Roshan Tower, Rajiv Market  
T.Y.C., Opp. Apsara Talkies, Rambagh, Agra-282006 (India)

✉ Info@roshanmachinetools.com

🌐 www.roshanmachinetools.com

☎ +91-562 2240155

☎ +91-9819128600, +91-7520162639